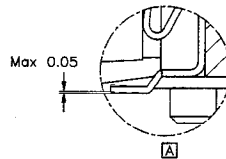
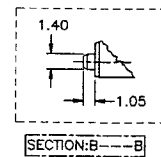
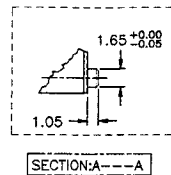
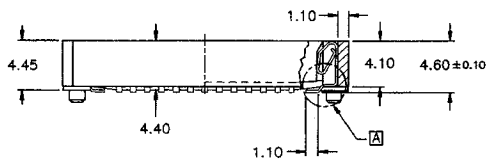
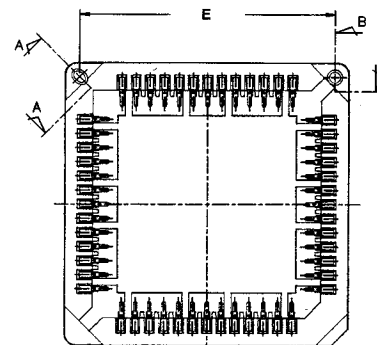
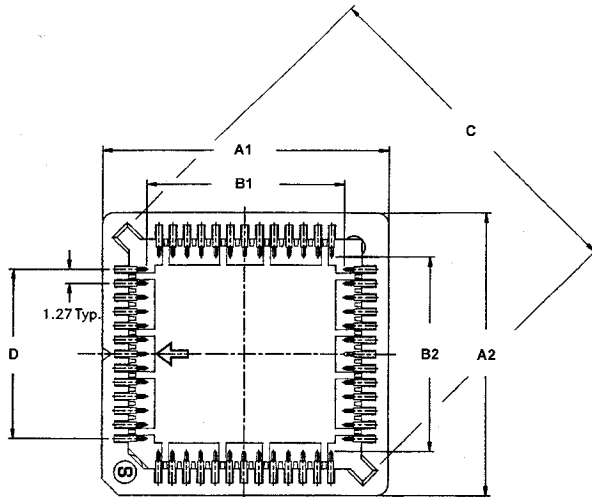
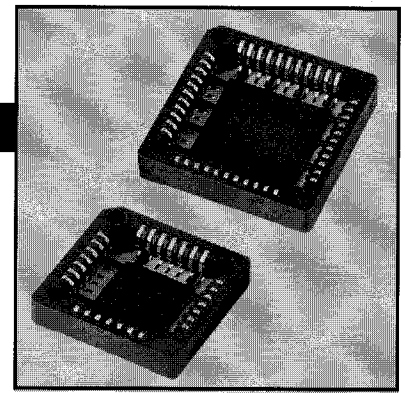


Series: EDO__ PLCZSM

Plastic Leaded Chip Carrier SMT



Ordering example: **EDO - 32 PLCZSM - N**

No. of Positions	Dimensions						
	A1±0.2	A2±0.2	B1±0.2	B2±0.2	C±0.2	D±0.2	E±0.2
20	14.86	14.86	7.26	7.26	15.83	5.08	12.70
28	17.40	17.40	9.80	9.80	19.24	7.62	15.24
32	19.45	16.90	12.35	9.80	21.67	7.62	12.88
44	22.48	22.48	14.88	14.88	27.10	12.70	20.32
52	25.40	25.40	17.50	17.50	30.76	15.24	22.86
68	30.54	30.54	22.50	22.50	37.60	20.32	27.94
84	35.56	35.56	27.62	27.62	45.13	25.40	33.02

Specifications

Plastic Leaded Chip Carrier Series:

EDO ___ PLCZ

EDO ___ PLCZSM

Ratings:

Current	1A
Dielectric strength	600VAC for 1 minute
Insulator resistance	5000M Ω Min.
Temperature thru-hole	-55°C / +110°C (PBT)
Temperature surface mount	-55°C / +170°C (PPS)

Material:

Insulator	PBT Glass filled, UL94V-0 PPS Glass filled, UL94V-0 (surface mount only)
Contact	Phosphor Bronze
Plating	Tin over Nickel

ORDERING PROCEDURE

 1 - 2 - 3

- 1) Series
- 2) Number of Positions (see chart for available positions)
- 3) Option:
 - Surface mount only
 - N = Non-polarized
 - P = Polarized